



Lands under conflict – incidence, drivers, and impacts:

An infographic on 2023 land monitoring reports from six Asian countries

I. Key Definitions

LAND CONFLICT

A result of conflicting interests over land and resource control, use, and management, with primary actors having different goals.

CASE

Details the storyline of the conflict which includes the basic information about the conflict.

CONFLICT RELATIONSHIP

A set of competitive interactions between two or more stakeholders that define a conflict. Stakeholders involved are affected communities and adversarial claimants.

CONFLICT INCIDENT

An event or string of events showing incidents of violence with information on the victims and perpetrators, and their impacts.

COMMUNITIES AFFECTED by CONFLICTS

Refers to households and communities with a stake in the contested land and its services. They may claim rightful tenure and are identified by their sector or land-use livelihoods.

ADVERSARIAL CLAIMANTS

Individuals or groups, often from outside the community, with contested claims on the community land or resource. Conflicts may also involve poor sectors with competing claims within the same community.

DRIVER OF LAND or RESOURCE CONFLICT

Refers to the way the adversarial claimants use or intend to use the contested land or resource – in conflict with local communities.

INCIDENTS OF HUMAN RIGHTS VIOLATIONS (HRVs)

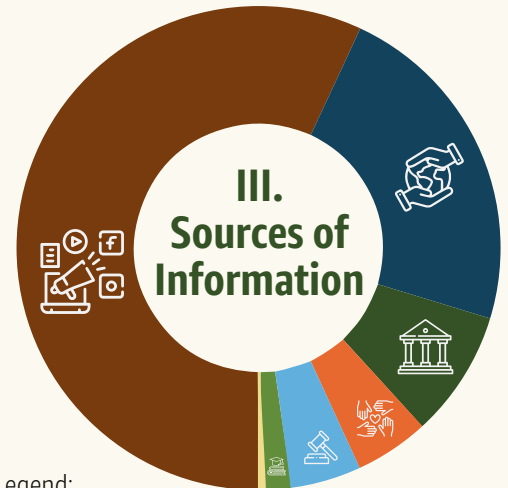
They serve as markers for ongoing land conflicts. These are violations committed against individuals or communities.

II. Scope

- Bangladesh, Cambodia, India, Indonesia, Nepal, and the Philippines.

- Ongoing structural land conflicts as of 01 January 2023.
- Most land conflicts are in rural areas, with some in urban areas in Cambodia, India, Nepal, and the Philippines. All these countries, except Nepal, also monitor conflicts over water resources.
- The monitoring includes human rights violations, both violent and latent, from 1 January 2023 to 31 December 2023.

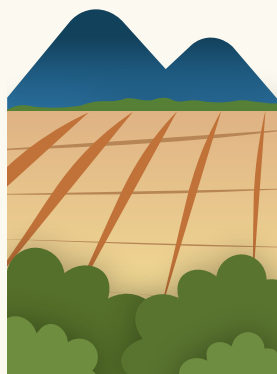
III. Sources of Information



Legend:

- Mainstream Media **57%**
- CSO/NGO **23%**
- Government Agencies/Institutions **8%**
- Community, Community-based Organizations **5%**
- Court **5%**
- Professional Organizations/Academe **2%**
- Police Reports and National Human Rights Institution/Commission (NHRI/C) **0%**

IV. Overview of Land Conflict Cases: 2023 at a Glance



691

Land conflict cases in six Asian countries

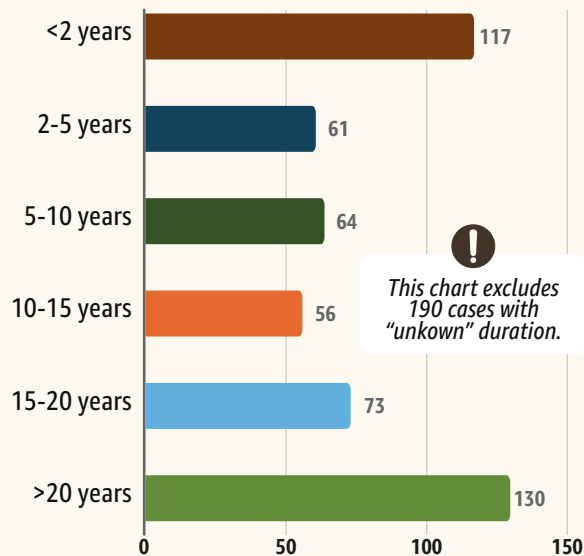
1,557,564

Hectares of land affected by ongoing conflicts

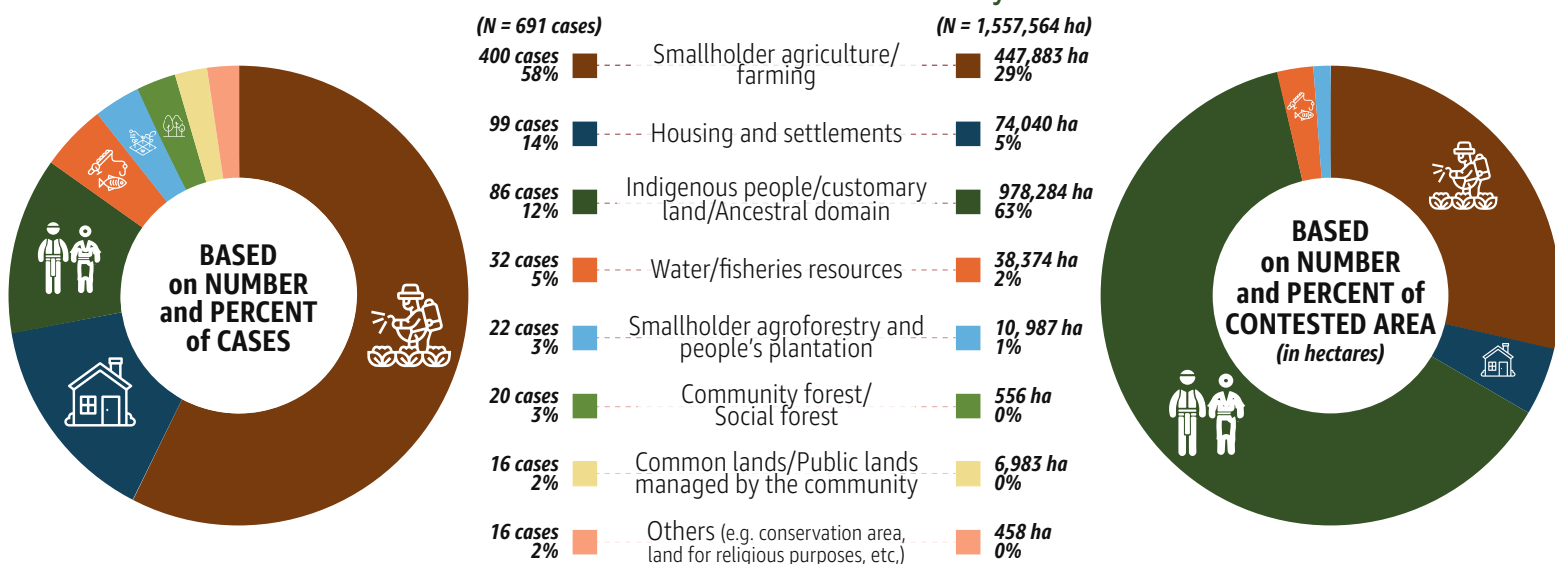
454,497

Households affected by ongoing land conflicts

DURATION of CONFLICTS RECORDED from SIX ASIAN COUNTRIES, 2023 (N = 691)

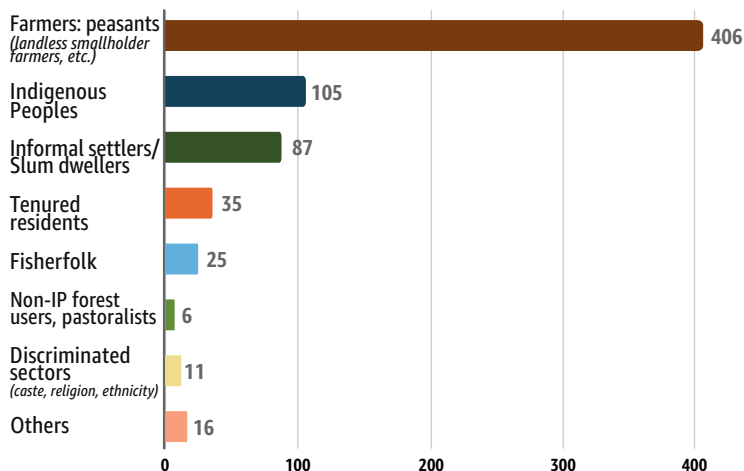


TYPE of LAND and RESOURCE AFFECTED by CONFLICTS:

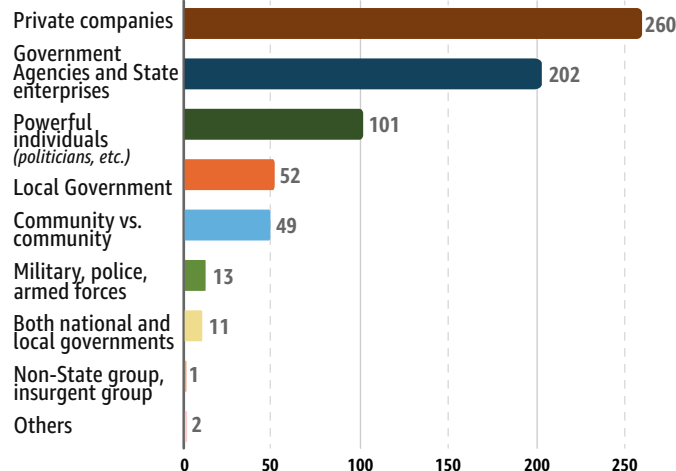


V. Stakeholders in Conflict by Number of Cases (N = 691)

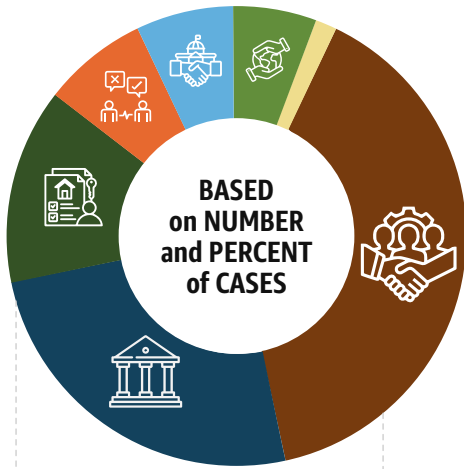
AFFECTED COMMUNITIES



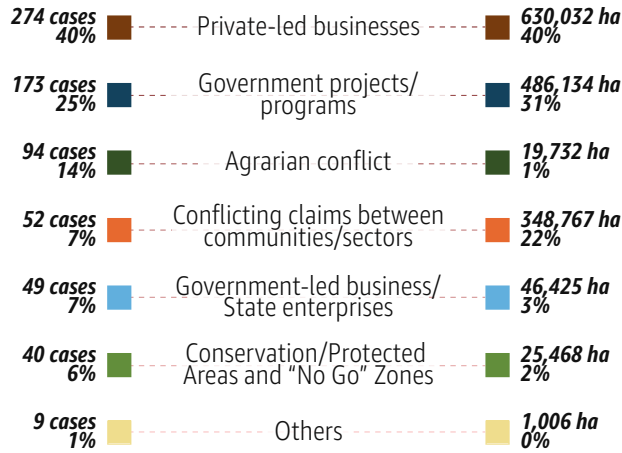
ADVERSARIAL CLAIMANTS



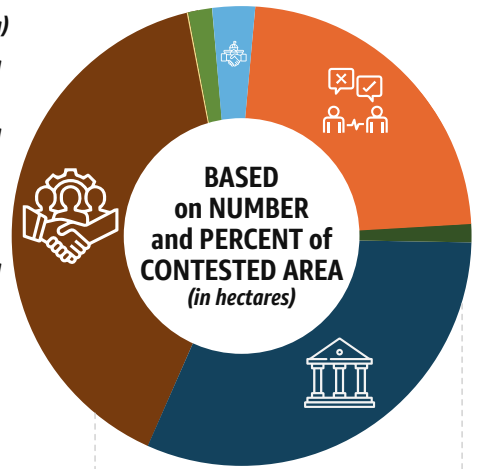
VI. Drivers of Land and Resource Conflict



(N = 691 cases)



(N = 1,557,564 ha)



PRIVATE-LED BUSINESS ENTERPRISES (BREAKDOWN):



Bar Chart for percentage breakdown of "private-led business enterprises" by number of cases.

Bar Chart for percentage breakdown of "private-led business enterprises" by contested area in hectares.

GOVERNMENT PROJECTS/PROGRAMS (BREAKDOWN):



Bar Chart for percentage breakdown of "government projects and programs" by number of cases.

Bar Chart for percentage breakdown of "government projects and programs" by contested area in hectares.

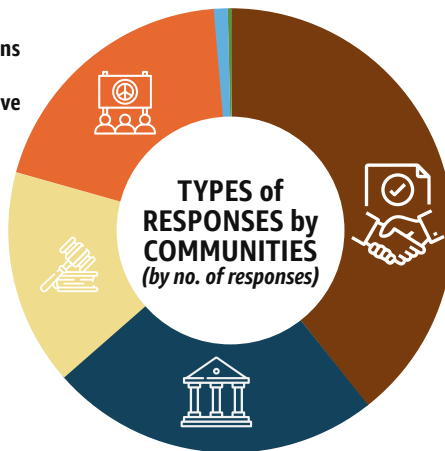
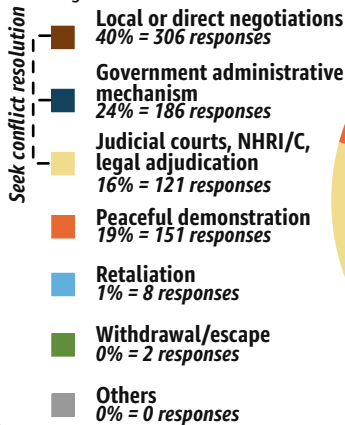
VII. Addressing Land Conflicts

RESPONSES BY COMMUNITIES

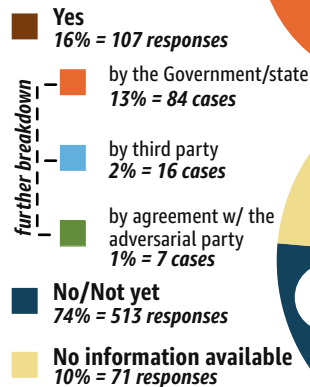


With response	No response	No info available
602 cases 87%	1 case 0%	88 cases 13%

Legend:



Legend:



further breakdown



VIII. Individual and Community Victims of HRVs

110

incidents against individuals



654

individual victims

217

incidents against communities

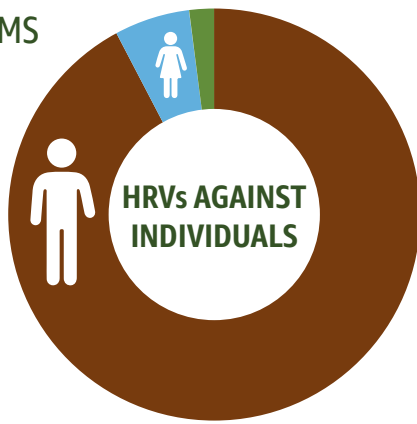
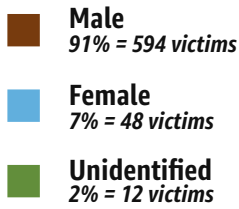


95,021

households affected

INDIVIDUAL VICTIMS of HRVs, BASED on GENDER (N = 654)

Legend:



against individuals
(no. of individuals)

PERPETRATORS of HRVs

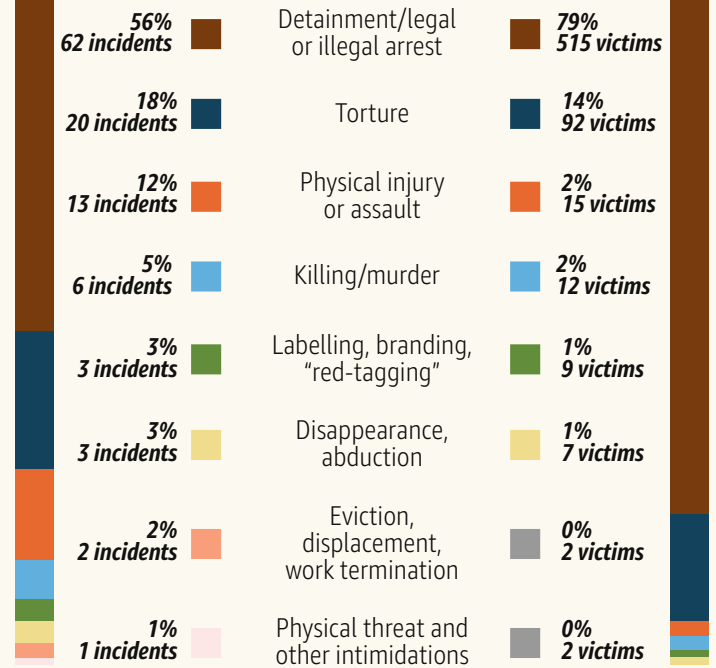
against communities
(no. of households)

81	Armed agents of the State <i>(police, army, or military)</i>	129
14	Private companies, private armed groups	41
0	Government Agencies	13
1	Local Government	12
8	Powerful individuals, authorities <i>(e.g. politicians, ex-bureaucrats, ex-military, etc.)</i>	10
5	Unidentified assailants	7
0	Both National and Local Governments	1
0	Non-State Group, Insurgent Group	0
1	Others	4

based on no. of incidents
(N = 110 incidents)

TYPES of HRVs AGAINST INDIVIDUALS

based on no. of victims
(N = 654 victims)



IX. Six Key Areas to Address:

1. Immediate action and resolution on land conflict cases
2. Efficient management and governance
3. Effective implementation of land and resource reforms
4. Practice responsible business
5. Enhance land literacy among communities and governments
6. Enhance and broaden land conflict monitoring

HRVs AGAINST COMMUNITIES:



76,240 households

Evicted, displaced, or terminated from work



6,556 households

Suffered destruction of crops, and property



1,608 households

Received physical threats and other intimidations



1,101 households

Experienced forcible entry, encroachment



6,734 households

Suffered destruction and pollution of habitats



2,782 households

Labelled, branded, and red-tagged

COMMUNITIES AFFECTED by HRVs:



Farmers: peasants

Incidents: 115
Households: 55,361



Informal settlers

Incidents: 60
Households: 20,349



Indigenous People

Incidents: 26
Households: 18,334



Fisherfolk

Incidents: 7
Households: 656



Tenured Residents

Incidents: 5
Households: 204



Others

Incidents: 4
Households: 117

Prepared by:



Partners:



Supported by:



Disclaimer: The views contained in this infographic do not necessarily reflect the views of the Global Land Tool Network (GLTN) and the United Nations Human Settlements Programme (UN-Habitat).

Infographic design by Angela Louise Soriano