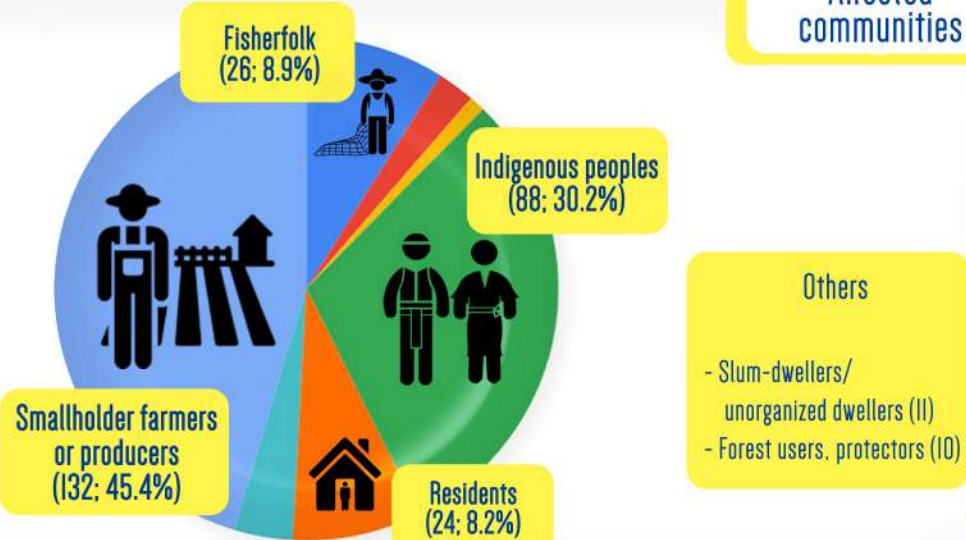
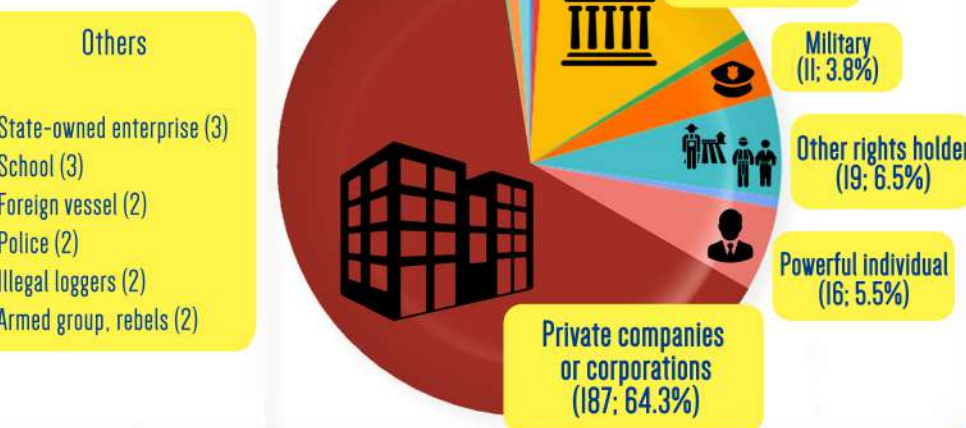


Stakeholders in Land Conflict and Resource

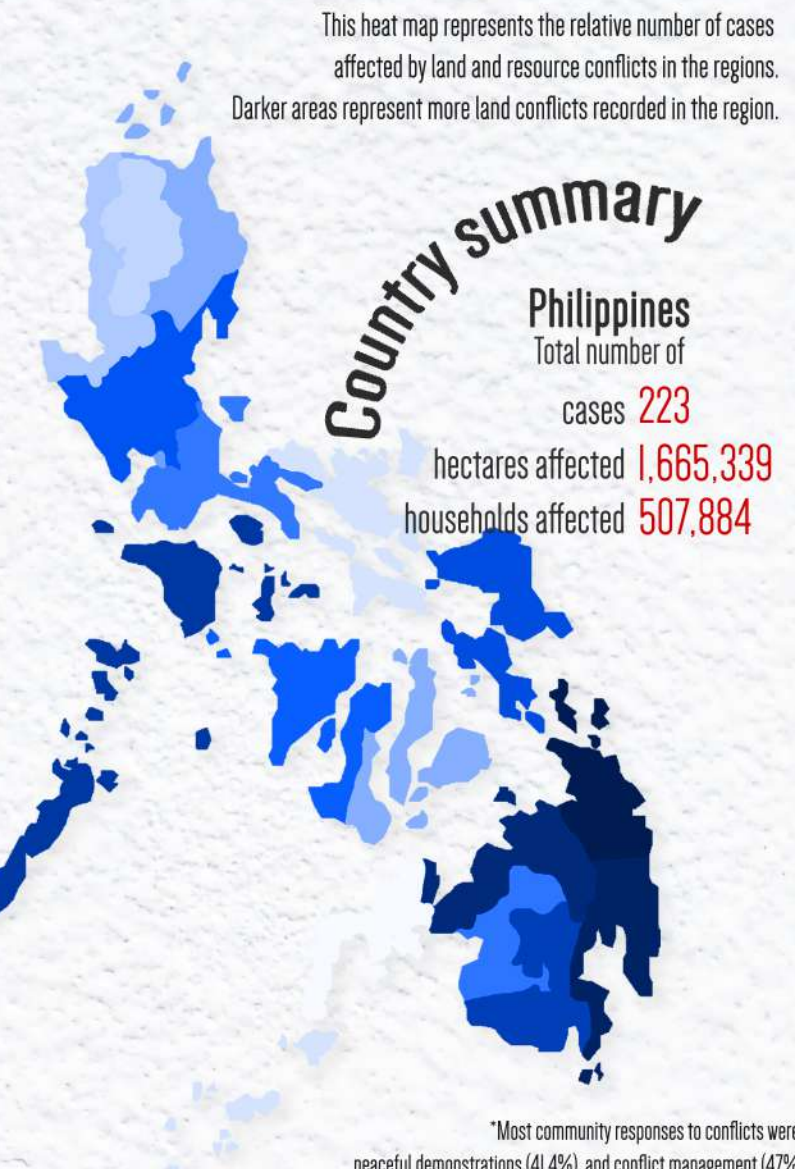
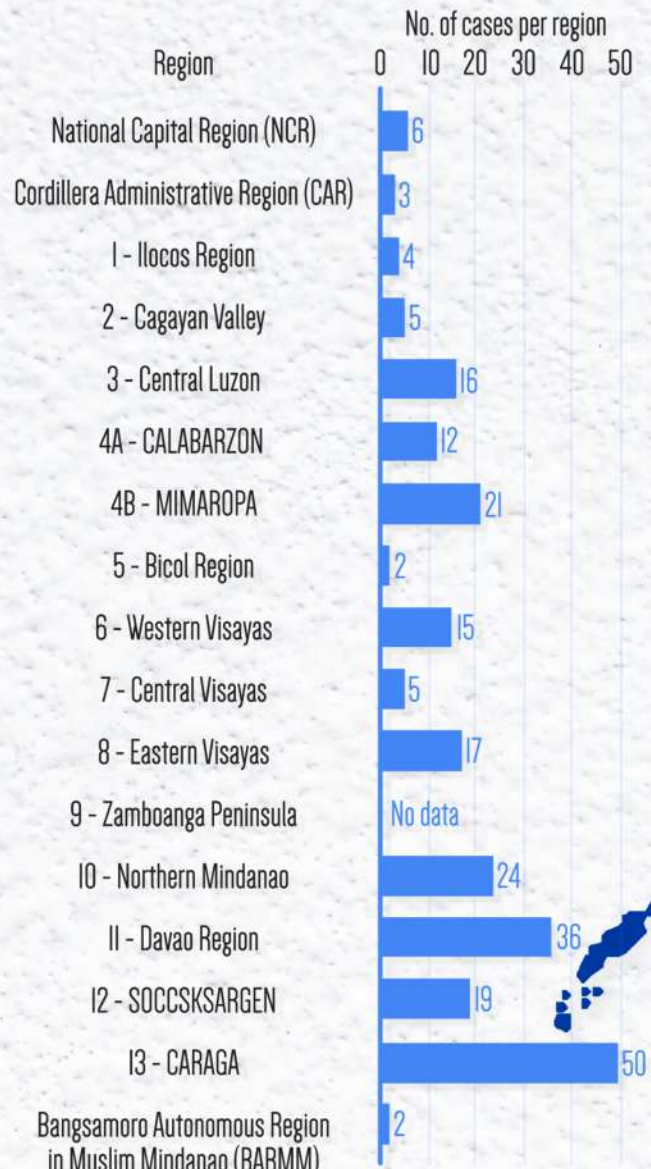
Affected communities



Adversarial claimants



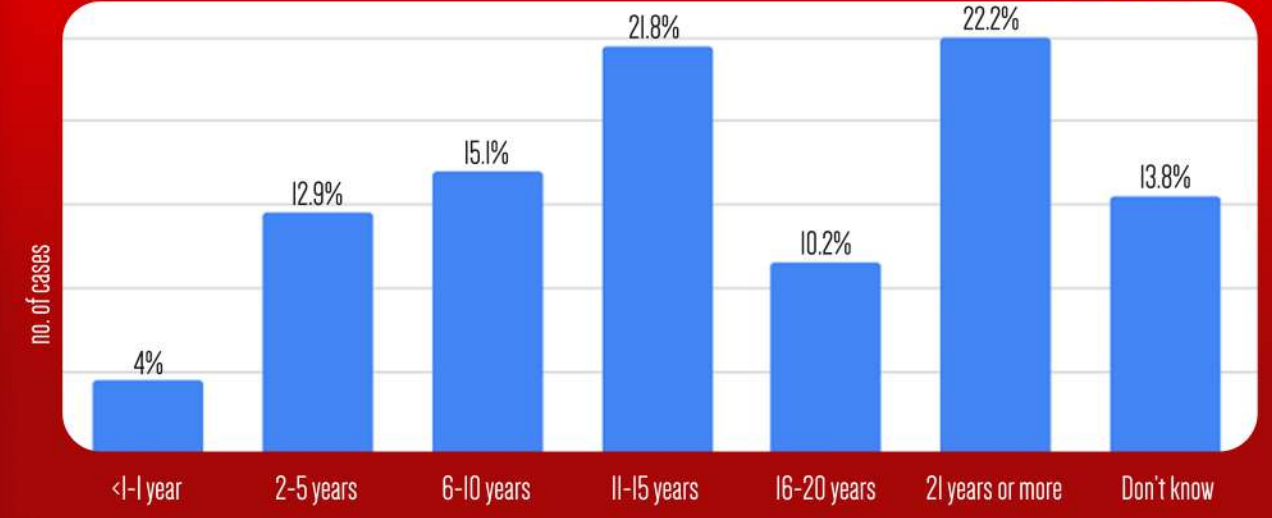
2020 Land and Resource Conflicts in the Philippines



Disclaimer:
The views in the land conflict monitoring reports do not necessarily reflect the views of ILG and UNDP BH+R Asia

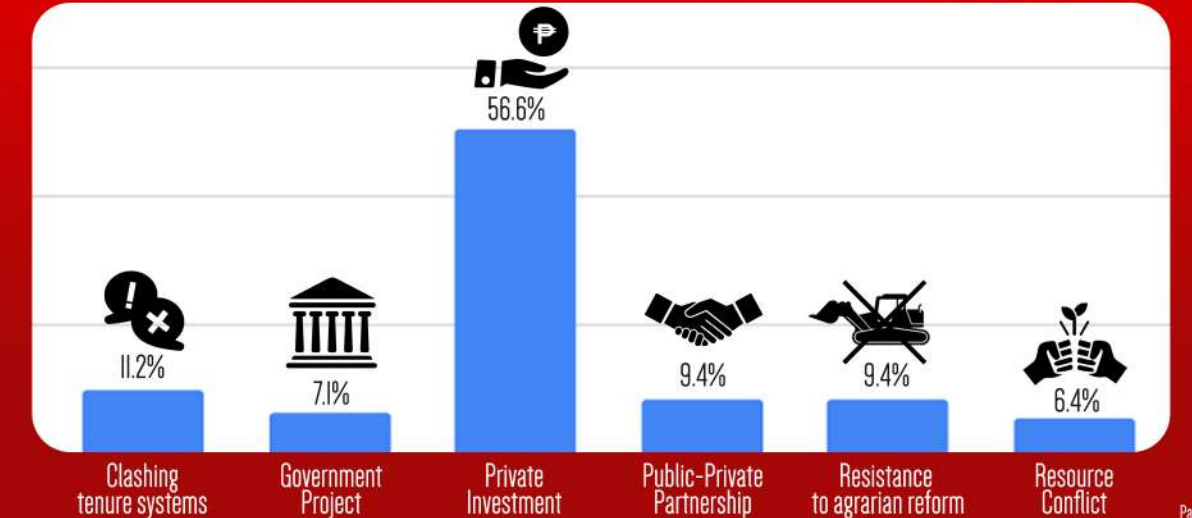
How long have these conflicts been going on?

from total no. of cases (223)



What are the sources of conflict?

from total no. of cases (223)



Individual victims by gender



Don't
?
Know

152 individuals with unreported or unknown gender

Individual violence experienced by victims



38 killed



49 detained



40 disappeared



| tortured



10 injured



60 criminalized



80 red-tagged

Physical

Killing, Detainment, Disappearance, Torture, & Injury

Psychological

Harassment, & Death Threats

Economic

Property Destruction, & Unemployment

Political

Red-tagging, criminalization, dispossession, & encroachment

*from violent incidents recorded

31.6%

17.7%

15.1%

35.6%

Households affected by ecological violence

*from incidents where number of households affected is known or accounted for



27,371
Contamination of
resources/pollution



4,333
Destruction of
biodiversity

Households affected by community violence

*from incidents where number of households affected is known or accounted for



401
Destruction
of property



48
Disenfranchisement



28,317
Displacement



35
Forcible entry/
lack of or faulty FPIC



37
Harassment, intimidation,
persecution, trauma

Perpetrators of individual violence



209 State agents
(military, police)



161 Powerful
Individual



29 Unidentified
assailants



26 Private company
or corporation



5 Paramilitary



3 Non-State
armed groups



2 Criminal
syndicate

Perpetrators of community violence



30 State agents
(military, police)



16 Private company
or corporation



10 Unidentified
assailants



6 Non-State
armed groups



5 Powerful
Individual



2 Private
armed groups



1 Foreign
Fishing Vessels

Prepared by:



Data sources:

(In order)

Mainstream media (online) - 51%

CSO/NGO/PO - 18.8%

Social Media Platforms - 12.9%

Academe - 11.9%

Government agencies - 5.2%

NHRI/C - 0.3%